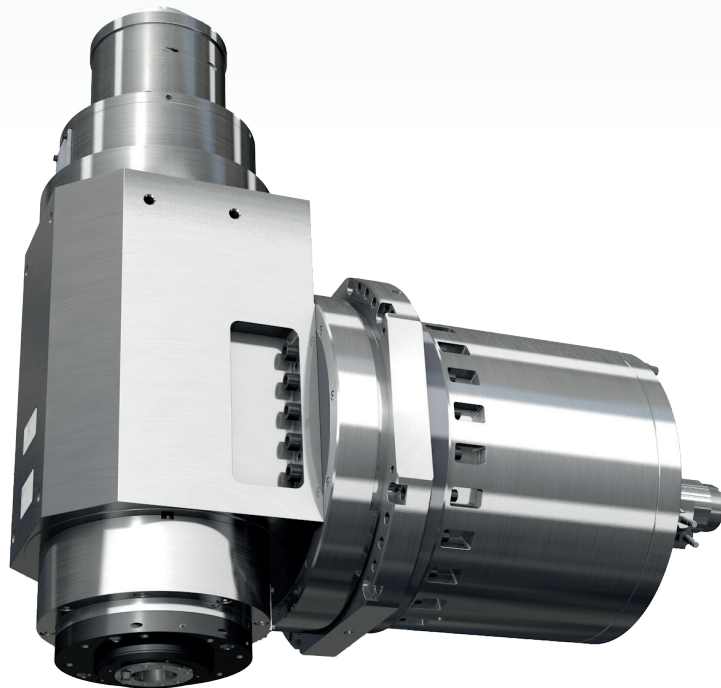


SIEMENS

Ingenuity for life



Milling spindle with integrated B-axis motor

July 2019

Milling spindle with integrated B-axis Motor

Milling spindle - technical data (exemplary)

Torque (S1)	up to 160 Nm (HSK-A63)
	up to 585 Nm (HSK-A100)
Speed	up to 24,000 rpm (oil air lubrication)
	up to 18,000 rpm (grease lubrication)
Tool interface	SK, HSK-A, HSK-T, PSC

Features milling spindle:

- › Complete energy supply (electricity, water, air, sensor signals, ...) via central connection plate
- › Fast change of milling spindle from HSK to SK possible on site
- › Shaft clamping force-fitted or form-fitted as an option
- › Automatic tool change
- › Bearing lubrication: grease, optional oil-air or oil direct lube
- › Option: coolant through tool and external coolant
- › WEISS spindle sensor module - SMI24 (optional)



Features B-axis:

- › Compact design
- › Huge tilting stiffness due to rigid bearing arrangement
- › Bending range from vertical position +/- 120° with mechanical stop
- › No hysteresis while alternating moment loading
- › Force-fit or form-fit axis clamping
- › Self-acting axis-clamp in case of power loss
- › Transmission of complete energy supply for milling spindle
- › High capability by built-in torque motor
- › High positioning accuracy due to high-resolution encoder
- › DRIVE-CLiQ - SMI20 (optional)



The information provided in this brochure contains merely general descriptions or characteristics of performance which in case of actual use do not always apply as described or which may change as a result of further development of the products. An obligation to provide the respective characteristics shall only exist if expressly agreed in the terms of contract.

All product designations may be trademarks or product names of Siemens AG or supplier companies whose use by third parties for their own purposes could violate the rights of the owners.

Subject to change without prior notice
Printed in Germany
© Siemens AG 2019

Siemens AG
WEISS Spindeltechnologie GmbH
A Siemens Company
Birkenfelder Weg 14
96126 Maroldsweisach

GERMANY

www.weissgmbh.com