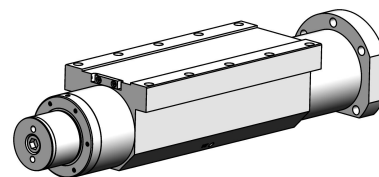


**dresser spindle:
hydraulic expansion
element**

5.000 min⁻¹



specification

1.2.2021

interface:	hydraulic expansion element
tool release unit:	none
rotation unit:	no
encoder:	no
max. speed:	5000 min ⁻¹
nominal speed:	0 min ⁻¹
nominal power:	0 kW
nominal torque:	0,0 Nm
kind of motor:	synchronous
spindle housing design:	block
block size WxH:	109 mm
total length:	390 mm
working position:	horizontal
bearing Lubrication:	grease