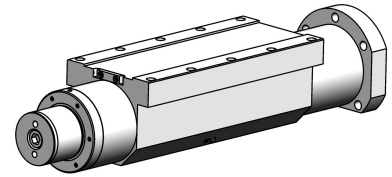


**dresser spindle:
hydraulic expansion
element**

5.000 min⁻¹



specification

12.1.2021

interface:	hydraulic expansion element
cleaning air:	
tool release unit:	n/a
rotation unit:	n/a
encoder:	none
increment number:	
max. speed:	5000 min ⁻¹
nominal speed:	0 min ⁻¹
nominal power:	0 kW
nominal torque:	0,0 Nm
kind of motor:	none
moment of inertia (spindle):	0,0000 kgm ²
spindle housing design:	block
block size WxH:	109 mm
total length:	390 mm
working position:	horizontal
front bearing:	
ISO Size Code:	19
bearing bore diameter:	40 mm
bearing pitch circle diameter:	51 mm
character speed value:	0,25 Mio dn
rear bearing:	
ISO Size Code:	19
bearing bore diameter:	30 mm
Arrangement of bearings:	<<>> <>

bearing Lubrication:

grease

