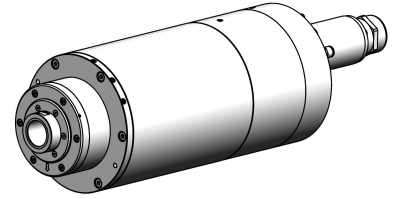


**grinding spindle:
special****40.000 min⁻¹****specification**

12.1.2021



interface:	special
cleaning air:	
tool release unit:	
rotation unit:	
encoder:	none
increment number:	0
max. speed:	40000 min ⁻¹
nominal speed:	23000 min ⁻¹
nominal power:	23 kW
nominal torque:	9,6 Nm
kind of motor:	asynchronous
moment of inertia (spindle):	0,0030 kgm ²
spindle housing design:	quill
installation diameter:	150 mm
total length:	371 mm
working position:	horizontal
front bearing:	
ISO Size Code:	19
bearing bore diameter:	45 mm
bearing pitch circle diameter:	56,5 mm
character speed value:	2,26 Mio dn
rear bearing:	
ISO Size Code:	19
bearing bore diameter:	40 mm
Arrangement of bearings:	<< M ~>>
bearing Lubrication:	oil air