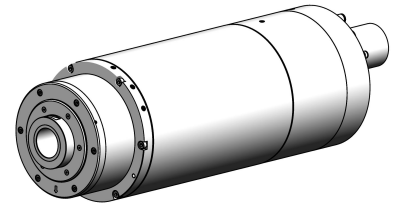


grinding spindle: special

18.000 min⁻¹



specification

12.1.2021

interface:	special
cleaning air:	
tool release unit:	
rotation unit:	
encoder:	none
increment number:	0
max. speed:	18000 min ⁻¹
nominal speed:	8000 min ⁻¹
nominal power:	23 kW
nominal torque:	27,5 Nm
kind of motor:	asynchronous
moment of inertia (spindle):	0,0120 kgm ²
spindle housing design:	quill
installation diameter:	170 mm
total length:	464 mm
working position:	horizontal
front bearing:	
ISO Size Code:	10
bearing bore diameter:	70 mm
bearing pitch circle diameter:	90 mm
character speed value:	1,62 Mio dn
rear bearing:	
ISO Size Code:	10
bearing bore diameter:	50 mm
Arrangement of bearings:	<< M ~>>
bearing Lubrication:	oil air

