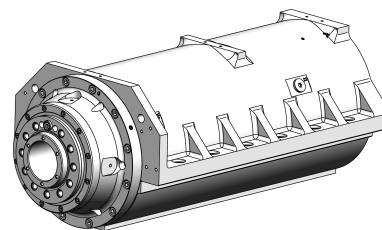


**turning spindle:  
A6 (DIN 55026)**

**5.500 min<sup>-1</sup>**

**specification**

13.1.2017



interface:	A6 (DIN 55026)
tool release unit:	none
rotation unit:	no
encoder:	yes
max. speed:	5500 min <sup>-1</sup>
nominal speed:	1200 min <sup>-1</sup>
nominal power:	37,7 kW
nominal torque:	300,0 Nm
kind of motor:	synchronous
spindle housing design:	casting
block size WxH:	376 mm
total length:	789 mm
working position:	vertical/nose down
bearing Lubrication:	grease

**WEISS**  
G M B H