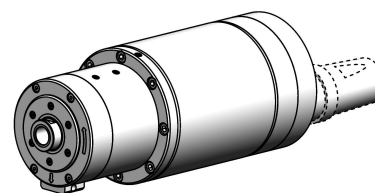


**grinding spindle:  
special**

**51.000 min<sup>-1</sup>**

**specification**

13.1.2017



interface:	special
tool release unit:	none
rotation unit:	no
encoder:	no
max. speed:	51000 min <sup>-1</sup>
nominal speed:	44093 min <sup>-1</sup>
nominal power:	9 kW
nominal torque:	1,9 Nm
kind of motor:	asynchronous
spindle housing design:	quill
installation diameter:	120 mm
total length:	280 mm
working position:	horizontal
bearing Lubrication:	oil air

**WEISS**  
G M B H